

Figure 17A. Well-developed multiple sets of parallel shock lamellae in a pyroxene crystal. At least six separate sets can be distinguished. Fragment 318,512; plane polarized light; scale bar 0.1 mm.

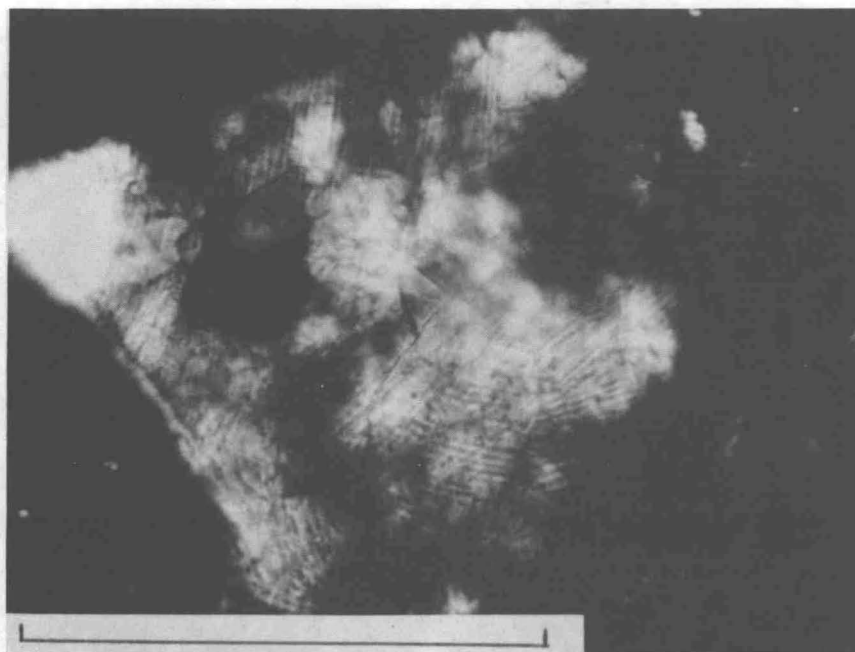


Figure 17B. Same view as Figure 17A; crossed polarizers. Extinction is slightly mosaic in the crystal, but the dark areas are not isotropic.

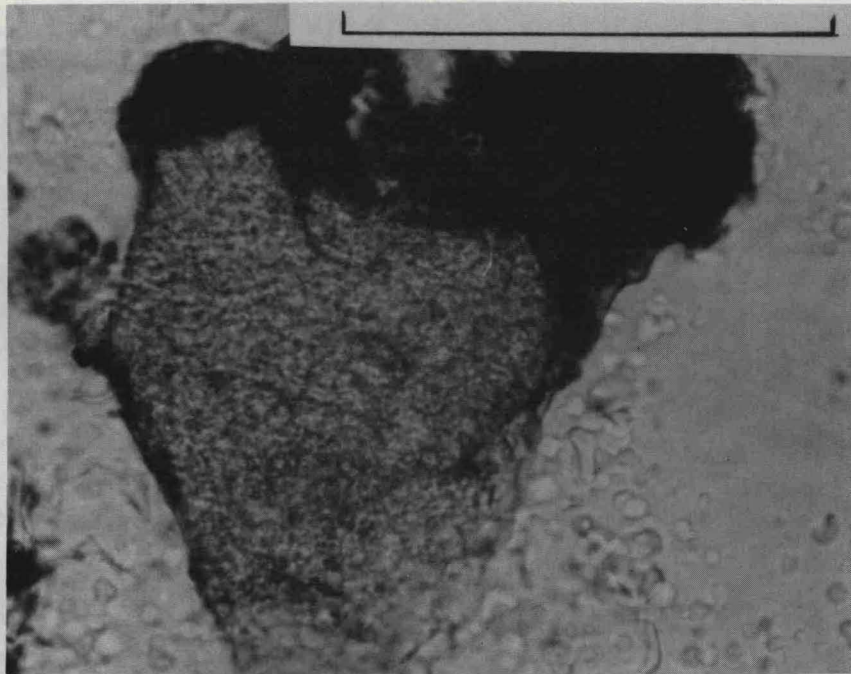


Figure 18A. Strong mosaic extinction in a pyroxene grain in dark microbreccia. Planar shock lamellae are poorly developed in the upper left part of the crystal (running NW-SE), but cannot be recognized elsewhere. Fragment 318,182; plane polarized light; scale bar 0.1 mm.

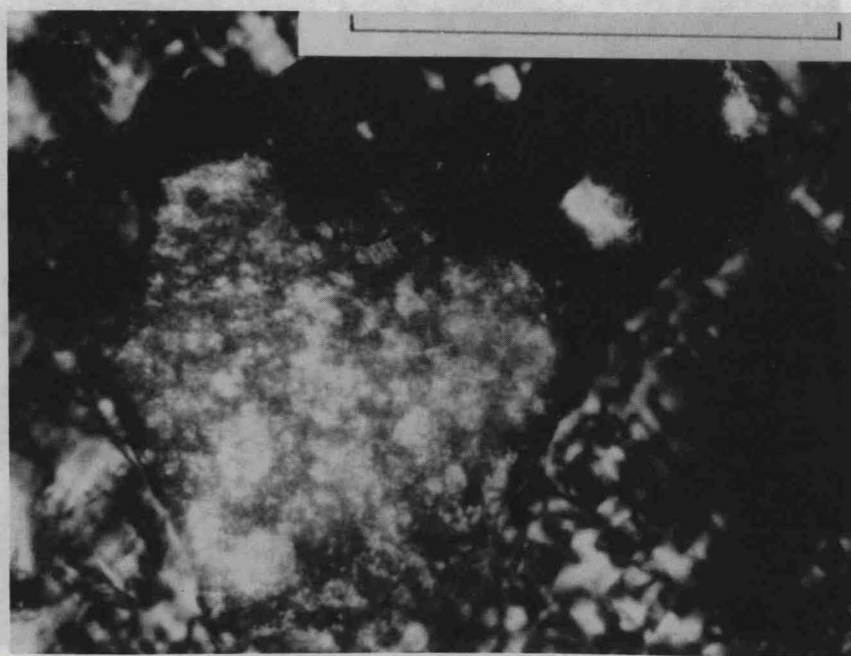


Figure 18B. Same view as Figure 18A; crossed polarizers. Extinction in the crystal is very irregular and patchy and highly mosaic, but definite isotropic areas are not present.